

ENTREDU

A World Of Outstanding Approaches On Entrepreneurship Education & Training

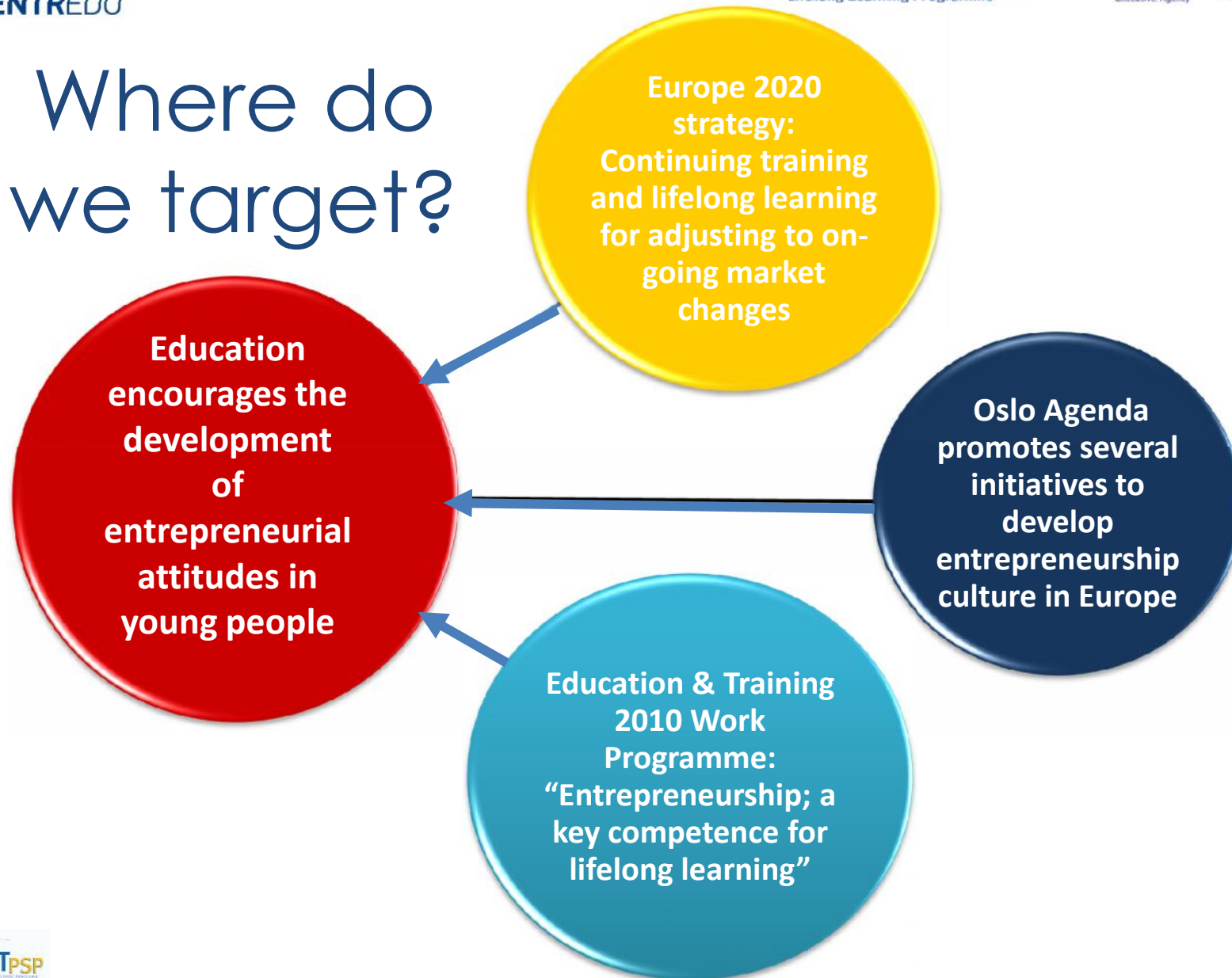


ENTREDU in a nutshell

1. Create the **ENTREDU** multilingual Portal
2. Gather entrepreneurial educational resources along with their social data
3. Authoring environment for creation of innovative learning activities
4. Community-based environment that promotes collaboration
5. Assess the impact of the activities to be adopted as prototypes



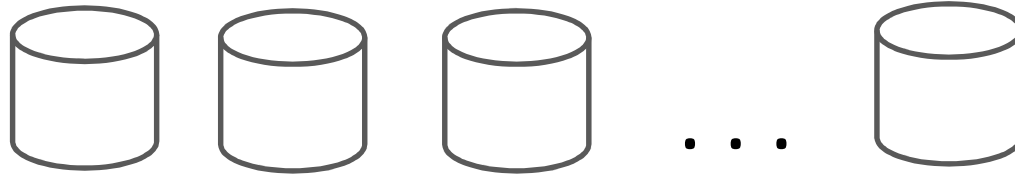
Where do we target?



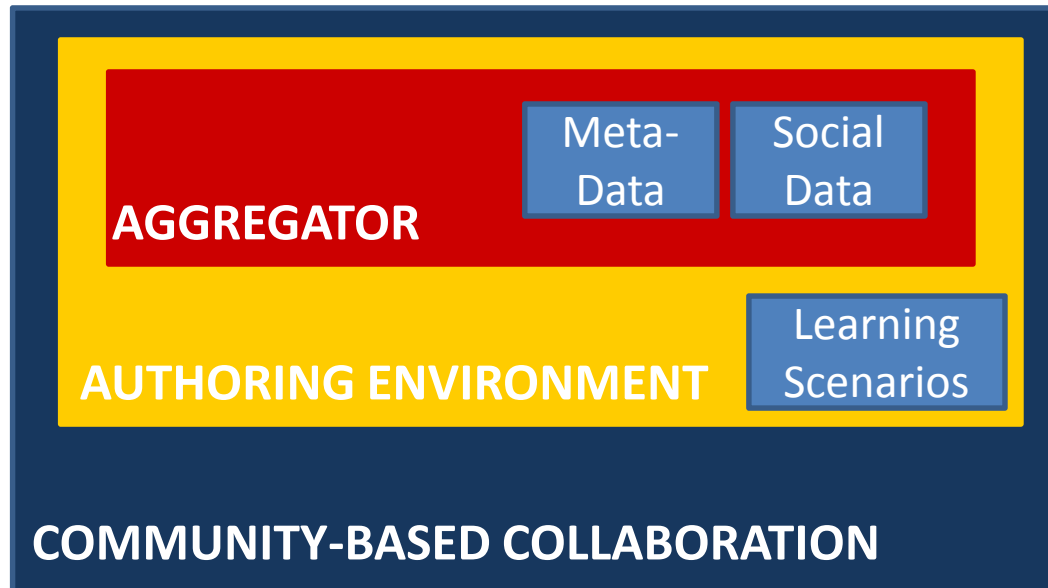
Where do we target?



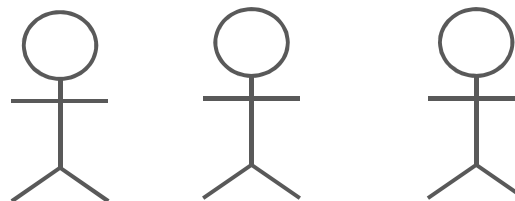
How do we achieve it?



Entrepreneurial
Resources



ENTREDU
PORTAL



Teachers /
Schools

Role of Partners



Project Management,
Portal Development,
Sustainability

Community building,
Introduction of ENTREDU
portal in EE schools (Rec.)



Project: Progress™
ENTREDU Social Platform
Development,
Contribution to Portal
Development

Requirements' analysis,
Best Practices Provider,
Quality Criteria for Best Practices





EE69 – ENTREDU



Thank you for your attention!





Project
Management,
Portal
Development,
Sustainability

- **Established:** 1996
- **Head Office:** Luxembourg
- **Leader** in European IT Solutions and services group
 - IT solutions to governments, public organizations and private enterprises in 70 countries around the globe
 - More than 1,500 highly-skilled professionals.
- **Expertise in:**
 - Successful track record in complex, high-profile Europe-wide, mission critical projects;
 - Ability to combine technical expertise and customer's business needs;
 - Extensive experience in a variety of SLA-governed and fixed-price-based complex deliveries;
 - Highly-skilled, efficient and flexible human resources.



ENTREDU Social Platform
Development,
Contribution to Portal
Development

- **Established:** 1992
- **Head Office:** Romania
- SIVECO Romania is the leading Romanian software house
 - eLearning, eHealth, eAgriculture, eCustoms, eGovernment,
 - European Community, The Middle East, North Africa and the CIS area.
 - 1,000 employees worldwide.
- Expertise in developing large and complex IT projects for:
 - millions of students, teachers and parents who build the "education of the future"
 - hundreds of organisations with major impact in the Romanian business environment
 - companies oriented towards success that invest in training thousands of employees



EE69 – ENTREDEU



Requirements' analysis,
Best Practices Provider,
Quality Criteria for Best Practices,
Pedagogies

- **Established:** 1992
- **Head Office:** France
- INSEAD is one of the world's leading and largest graduate business schools
 - Campuses in Europe (France), Asia (Singapore) and Abu Dhabi,
 - 146 renowned Faculty members from 34 countries
 - MBA, Executive MBA, Specialised Master's degrees and PhD programmes.
- Expertise in:
 - International business education
 - Conduct cutting edge research
 - Provision of knowledge and sensitivity to business leaders to operate anywhere



Community building,
User-based Validation,
Introduction of ENTREDU
portal in EE schools (Rec.)

- **Established:** 1961
- **Head Office:** Greece
- Ellinogermaniki Agogi is an educational organization of private law, officially recognized by the state.
 - Institutional member of EDEN, STEDE and ECSITE
 - Has coordinated and supported more than 60 RTD European and National projects.
 - Leader in research of digital education
- Ellinogermaniniki Agogi R&D Department focuses on:
 - The development of methodologies to investigate processes of learning and knowledge acquisition
 - The collaboration with CS departments for the development of computational models and Ambient Intelligence systems
 - The collaboration with Universities and private companies for the development and testing of educational software
 - The design of technology-supported learning environments.

More tomorrow

- After the first three and the presentation of the objectives add for each objective what is it and what is achieved in graphs and pictures